

# DUAL DRAWER SERIES

**CHEVY  
TAHOE**

POLICE PURSUIT VEHICLE

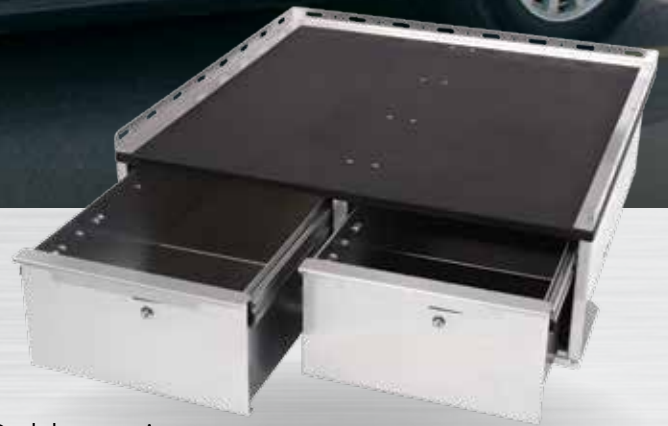


## STANDARDS:

- › Anti-skid top surface with cargo rail
- › Fabricated from 0.100" North American aluminum
- › One-handed latch system with key cylinder lock
- › Drawer slides rated at 500 lbs. total capacity

## OPTIONS:

- › Simplex 900 push button deadbolt with key override  
*Part#: 40101013*
- › Dividers – all types including egg crate  
*Part#: 40101014*
- › Pick N Pluck foam inserts  
*Part#: 40101003*
- › Padded gun mounts  
*Part#: 40101015*
- › Rubber matting per drawer  
*Part#: 40101010*
- › Powder coat black finish  
*Part#: 40101007*



Dual drawer unit

Model#: OP-CTU-16-47-36-DX

|   | MODEL#             | H   | W   | D   | DWR HT |
|---|--------------------|-----|-----|-----|--------|
| 1 | OP-CTU-12-47-36-DX | 12" | 47" | 36" | 10"    |
| 2 | OP-CTU-16-47-36-DX | 16" | 47" | 36" | 14"    |
| 3 | OP-CTU-20-47-36-DX | 20" | 47" | 36" | 18"    |



Dual drawer unit

Model#: OP-CTU-16-47-36-DX

IF YOU DON'T SEE WHAT FITS YOUR SPECIFIC NEED IN THIS BROCHURE, CALL AN OPS PUBLIC SAFETY™ SALESMAN FOR OTHER INNOVATIVE PRODUCTS.