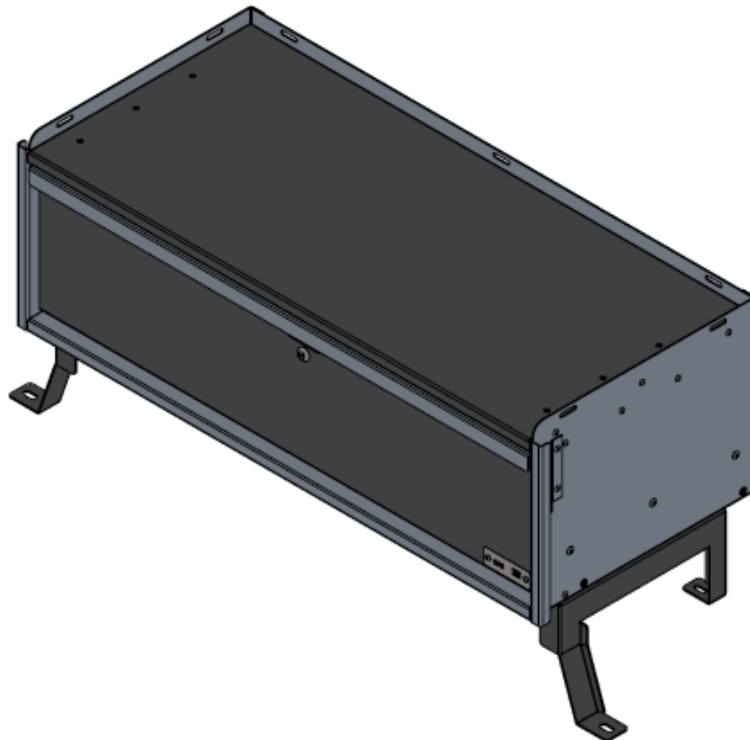


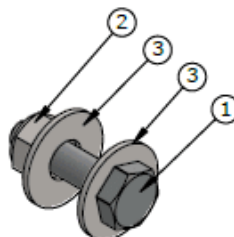


INSTALLATION INSTRUCTIONS

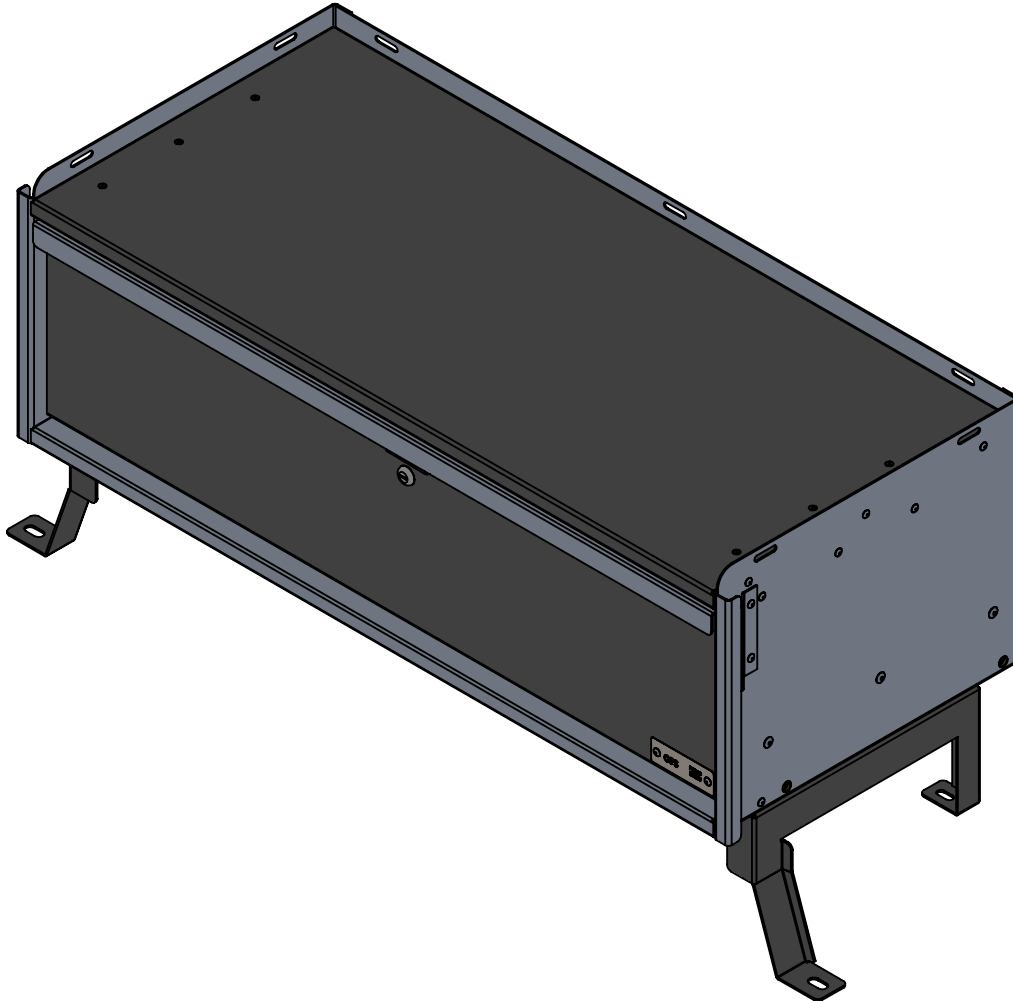
PDU-FIU-6



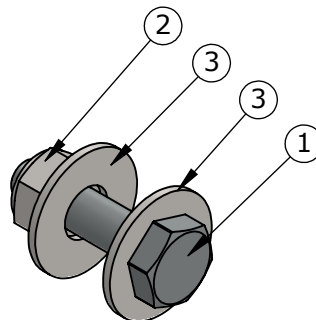
HARDWARE PROVIDED:



PDU-FIU-6,12 INSTALL INSTRUCTIONS



HARDWARE PROVIDED:



ITEM NO.	PART NUMBER	DESCRIPTION	QTY.
1	1051223	BOLT, HEX HEAD, 1/4"-20, 1" LONG, ZN PLACED, GRADE 5 CAP	4
2	1000094	NUT, NYLOX, 1/4-20, ZINC PLATED STEEL	4
3	1089578	WASHER, FLAT, 1/4" DIA, 3/4" OD, ZN PLATED STEEL	8



STEP 1:
REMOVE PLASTIC COVERS FROM FORD
INTERCEPTOR CROSS-BRACING (BOTH SIDES)
AND REMOVE THE FORWARD MOST BOLT FROM
CROSS-BRACE (BOTH SIDES) WITH 15mm
SOCKET.



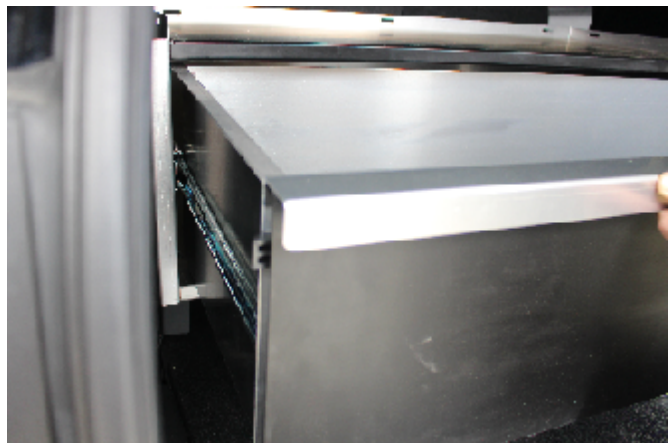
STEP 2:
REMOVE THE BOLTS SECURING THE CARGO
FLOOR (BOTH SIDES) USING 10mm SOCKET

STEP 3:
USING THE SAME MOUNTING HOLES FROM THE CARGO FLOOR, FASTEN THE DRIVER AND PASSENGER SIDE
BRACKETS USING THE **FACTORY PROVIDED HARDWARE** (REMOVED IN STEPS 1 AND 2).

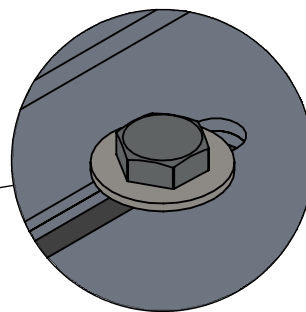
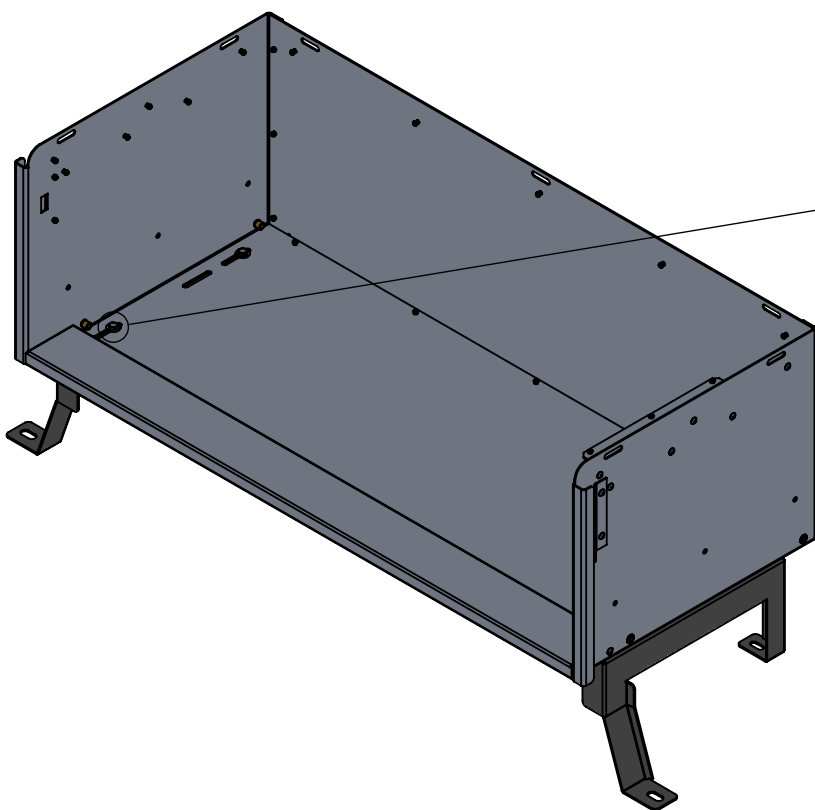


STEP 4:

REMOVE THE BOTTOM DRAWER BY OPENING IT TO FULL EXTENSION AND PUSHING THE PLASTIC TABS IN OPPOSITE DIRECTIONS LOCATED ON SLIDES ON BOTH SIDES OF THE DRAWER WHILE PULLING THE DRAWER STRAIGHT OUT.

**STEP 5:**

PLACE THE CABINET ONTO THE BRACKETS AND ALIGN THE SLOTS OF THE CABINET WITH THE SLOTS OF THE BRACKETS UNDERNEATH AND FIX THE CABINET USING THE HARDWARE PROVIDED (1), (2) AND (3).



DETAIL A
SCALE 1 : 1

STEP 6:

PLACE THE DRAWER BACK INTO CABINET BY ALIGNING THE SLIDES ON EACH SIDE AND PUSHING THE DRAWER STRAIGHT IN UNTIL FULLY CLOSED. DO NOT FORCE.

THE INSTALLATION IS NOW COMPLETE.