

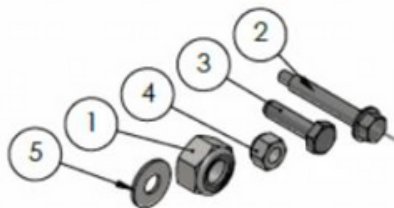


INSTALLATION INSTRUCTIONS

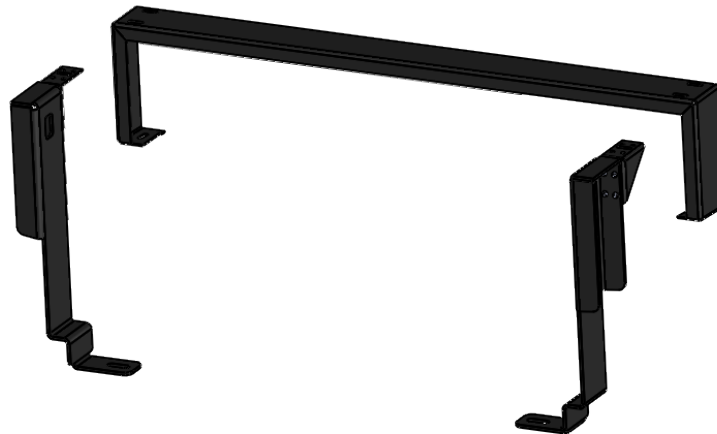
PDU-DDU-8



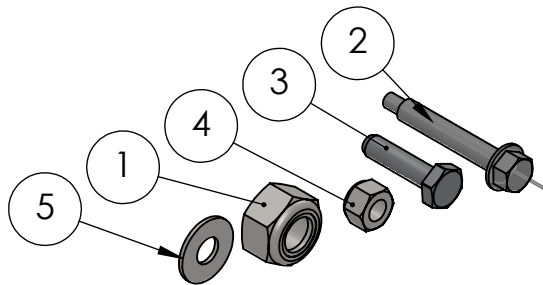
HARDWARE:



INSTALL INSTRUCTIONS FOR PDU UNIT USING PDU-DDU-8-BRACKETS



HARDWARE:



| ITEM NO. | PART NUMBER | DESCRIPTION | QTY. |
|----------|-------------|--|------|
| 1 | 1409445 | NUT, M12, NYLOCK, ZINC PLATED | 2 |
| 2 | 1409444 | SCREW, DRILLING, 1/4"-20 X 1-3/4", HEX HEAD | 2 |
| 3 | 1051223 | BOLT, HEX HEAD, 1/4"-20, 1" LONG, ZN PLACED, GRADE 5 CAP | 1 |
| 4 | 1000094 | NUT 1/4-20 NYLOC GRADE 5 | 4 |
| 5 | 1089578 | WASHER - 0.25" (0.3125"ID - 0.75" OD) | 10 |

| REVISION | DATE |
|----------|------------|
| I-1 | 06/08/2018 |



**STEP 1:
REMOVE FACTORY LOAD
FLOOR AND REAR SILL**



**NOTE: REPLACE NUTS
ON JACK AFTER TRIM
HAS BEEN REMOVED**



10mm



**STEP 2:
REMOVE PLASTIC PANELS FROM AREA**



10mm





FROM REAR



18mm

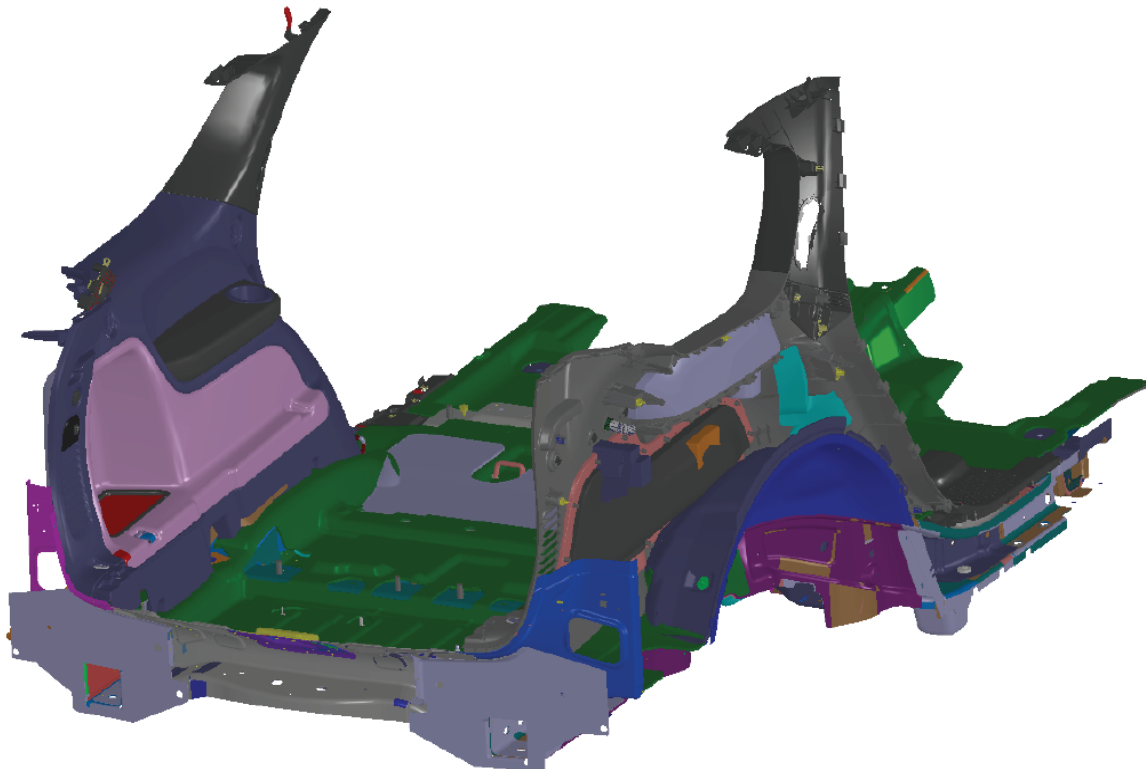


FROM FRONT

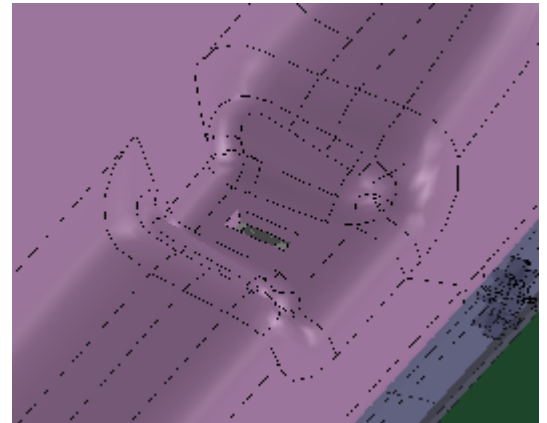
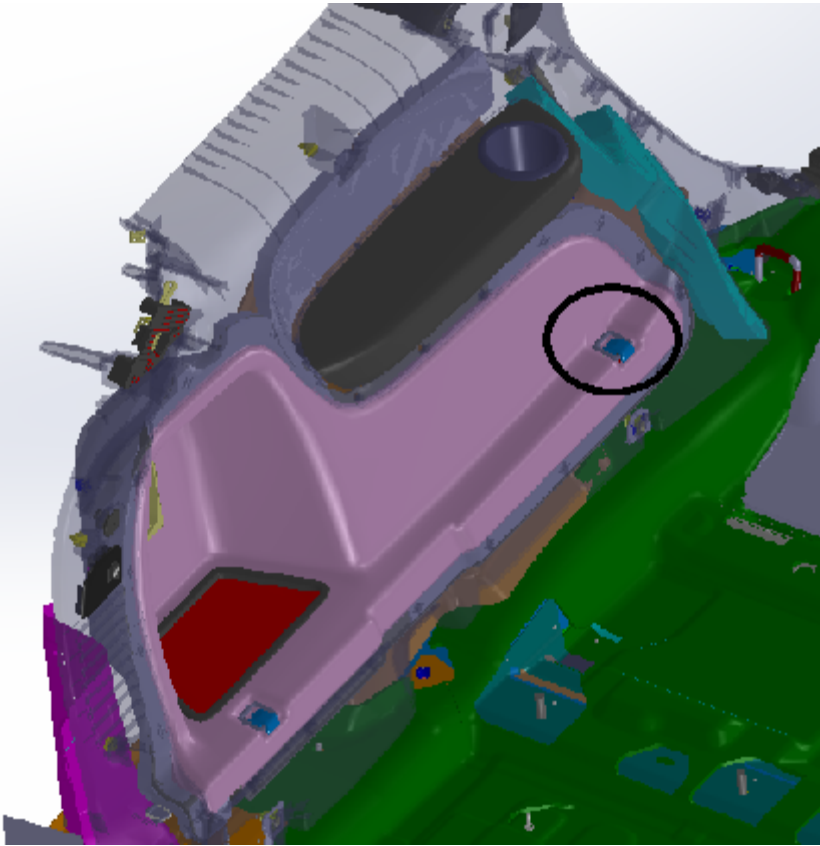


18mm

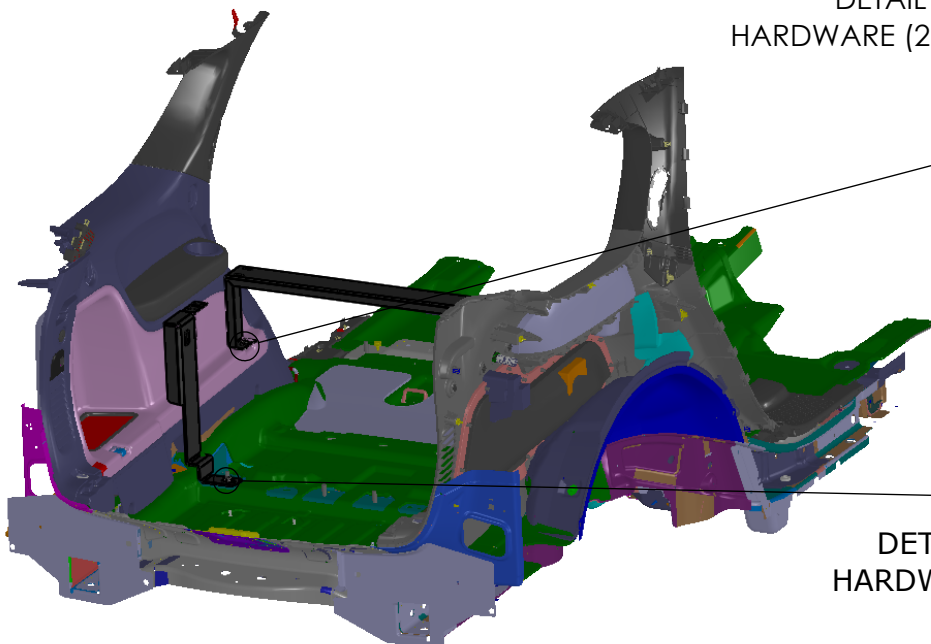
**STEP 3:
 REMOVE 3RD ROW
 SEAT IF EQUIPED**



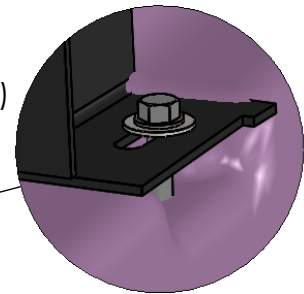
STEP 4:
REMOVE THE BUCKLE FROM BOTH SIDES AS SHOWN. BY REMOVING THE PLASTIC COVER THE SCREW WILL BE EXPOSED.



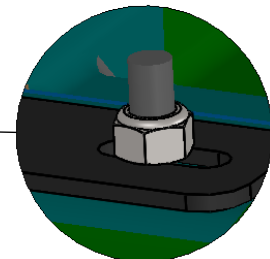
STEP 5:
INSTALL THE BRACKETS AS SHOWN USING THE HARDWARE PROVIDED.



DETAIL A
HARDWARE (2) AND (5)

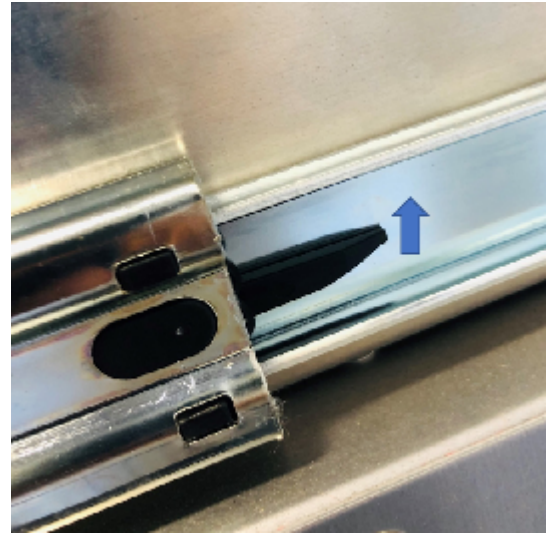
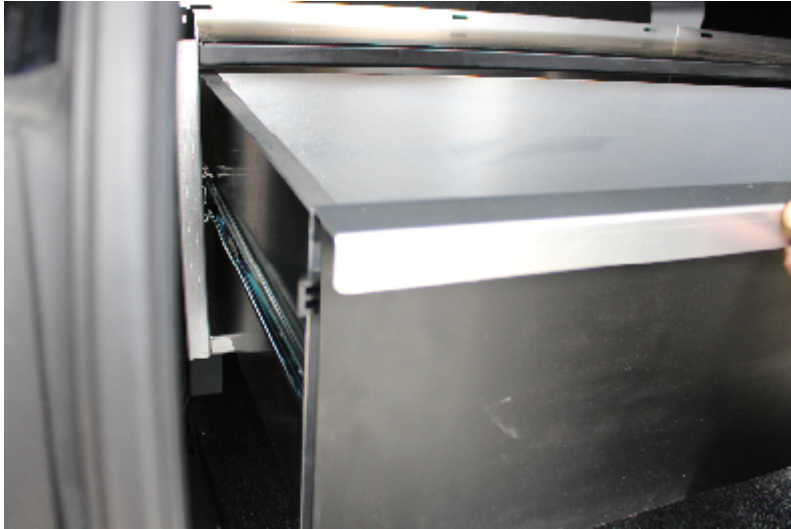


DETAIL B
HARDWARE (1)



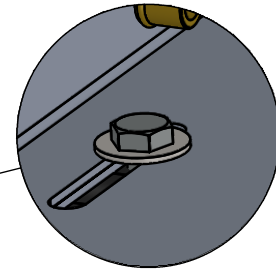
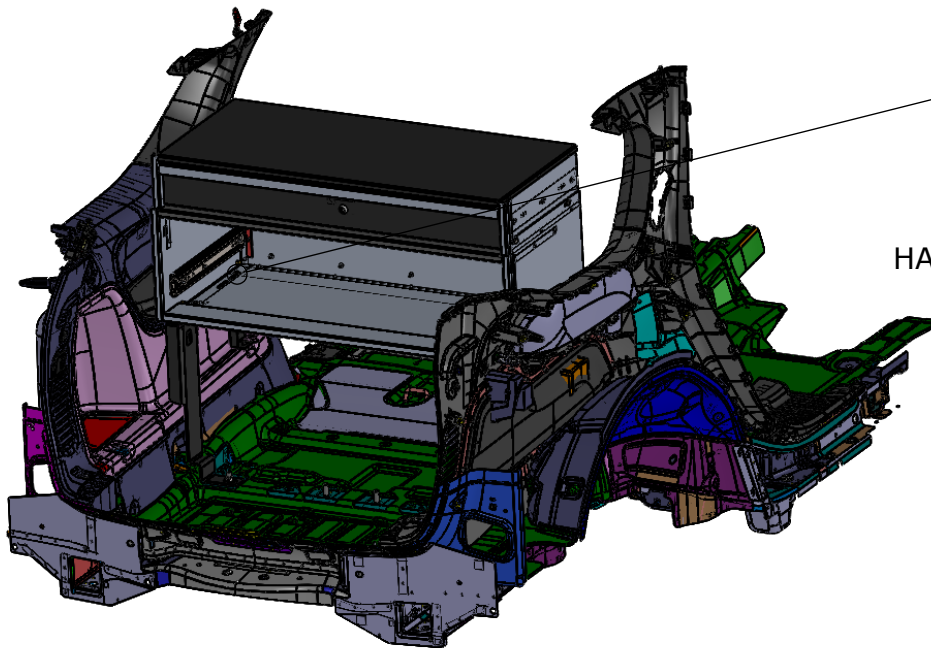
STEP 6:

REMOVE THE BOTTOM DRAWER BY OPENING IT TO FULL EXTENSION AND PUSHING THE PLASTIC TABS LOCATED ON BOTH SIDES OF THE SLIDE WHILE PULLING THE DRAWER STRAIGHT OUT.



STEP 7:

ALIGN THE SLOTS OF THE CABINET WITH THE SLOTS OF THE BRACKETS AND FIX THE CABINET USING THE HARDWARE PROVIDED.



DETAIL C
HARDWARE (3), (4) AND 2 X (5)

STEP 8:

PLACE THE DRAWER BACK INTO THE CABINET BY ALIGNING THE SLIDES ON EACH SIDE AND PUSHING THE DRAWER STRAIGHT IN UNTIL FULLY CLOSED.

INSTALLATION IS NOW COMPLETE.

